



David McKinney/University Relations

This 360-degree view shows the interior of the recently completed Structural Biology Center, including from left, a student work space, research lab, office and view of the atrium. The final two phases are complete and research is taking place. A dedication and public open house for the west campus building is planned for Oct. 23.

Structurally sound

Final phases of Structural Biology Center completed

It contains the largest magnet in Kansas and huge libraries but very few books. It contains lots of students but no actual classrooms. Parts of it are "old" and parts of it are brand new. Give up?

The answer to the riddle is KU's Structural Biology Center, known as SBC, located on west campus at the center of an emerging biosciences research complex. The first two segments of the building were completed in 2004. Two new wings, under construction since 2006, will be dedicated at a special Homecoming Week ceremony at 3:30 p.m. Oct. 23. A public open house will follow.

"The SBC is a tremendous asset for KU and our bioscience researchers," said Steve Warren, vice provost for research and graduate studies. "The original building, with its 800 MHz Nuclear Magnetic Resonance Laboratory, was an important first step. The

new additions are an even greater investment in the future of KU research. And the timing couldn't have been better."

SBC will house the recently announced Specialized Chemistry Center, backed by a \$20.2 million National Institutes of Health award. One of the new wings was built specifically to support the labs and students of Blake Peterson, who joined the KU faculty this spring as a Kansas Bioscience Authority Eminent Scholar.

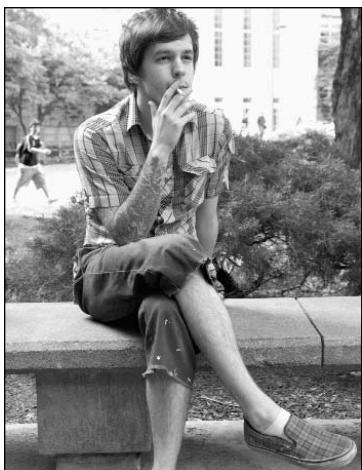
SBC also houses an NIH-funded Center of Excellence in Chemical Methodologies and Library Development, plus the High-Throughput Screening Laboratory (both of which use "libraries" made up of molecules rather than books). It also contains the Center for Cancer Experimental Therapeutics, an NIH-funded Center of Biomedical Research Excellence. All three facilities relocated this

summer from KU's Life Sciences Research Laboratory at 15th and Wakarusa Streets, freeing up space for other uses.

"The SBC is the hub of the entire west campus," said Warren. "It's where all roads meet." The Multidisciplinary Research Building is a short walk away, as is the Higuchi Biosciences Center and the Biotechnology Innovation and Optimization Center.

"The new School of Pharmacy building will be just to the north," said Warren, "and across the street will be the planned Lawrence-Douglas County Bioscience Wet-Lab Incubator. The core service labs in SBC potentially support all of this research activity. Together, it means KU can facilitate start-up companies, collaborate with industry and pursue other kinds of commercialization. SBC is a tool for great research and an economic

See SBC, page 6



Megan McAtee/University Relations

KU student Andrew Jilka smokes a cigarette on campus. Smokers will pay more for their health insurance this year.

Smokers will pay more thanks to changes in employee health insurance

Rates to increase approximately 5 percent for most

A discount for non tobacco users highlights changes to employee health insurance for plan year 2009. The discount is among the new features KU employees will need to consider during open enrollment for health insurance and flexible

spending accounts, which is under way and will run through Oct. 31.

All employees enrolled in a state of Kansas health insurance plan must complete a tobacco certification form, either on paper or online during Web open enrollment, to designate tobacco use status. Kansas Health Policy Authority has indicated that those who do not make a designation during open enrollment will be defaulted into the non-disclosure category. Those with tobacco

use or non disclosure status will not receive the discount and will pay higher premiums. The Non-Tobacco User Discount will be a \$20 discount per pay period for non-tobacco users or tobacco users who enroll and complete the state's HEALTHQUEST "iCan Quit Tobacco Cessation Program" program.

The health policy authority, which negotiates the state of Kansas insurance plans, has also stated that misrepresentation of

See INSURANCE, page 6



OUTSTANDING HONOR PAGE 7 NEWS



EDUCATION THAT 'CLICKS' PAGE 6 NEWS

Largest class ever sets records

Diversity, test scores reach new highs

A record-breaking 30,102 students enrolled at KU in fall 2008. The university also enrolled the largest, brightest and most diverse freshman class in its history. The first-time freshman class, whose enrollment is 4,483, earned a record-high average ACT composite score of 24.8, topping the national average of 22.

"KU continues to be the first choice for a diverse group of dedicated and talented students," said Chancellor Robert Hemenway. "Our Four-Year Tuition Compact is an added attraction for this talented pool, because these freshmen and their families know that a first-rate education will remain affordable."

KU's multicultural enrollment has grown each year since 2002. It made major leaps this year, with 12.7 percent of KU students identifying themselves as

The numbers

Overall: 30,102
Lawrence campus: 26,999
Medical Center: 3,103
Minority enrollment: 3,809
Entering freshman class: 4,483
Average ACT composite score for entering freshmen: 24.8

See Enrollment, page 6



web enhanced at www.oread.ku.edu

INDEX

- Headliners2
- Campus news3
- KU calendar 4-5
- From page one6
- KU jobs7
- KU people8

The University of Kansas

OREAD

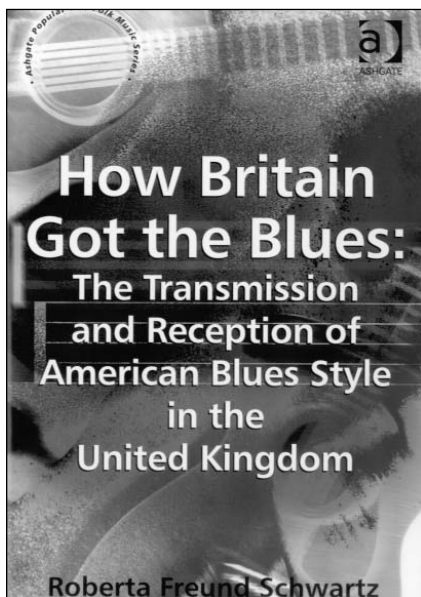
1314 Jayhawk Blvd.
Lawrence, KS 66045-3176

NON-PROFIT ORG.
U.S. POSTAGE
PAID
Lawrence, KS 66044
Permit No. 220

page two

RESEARCH MATTERS: Jude Kastens, research assistant professor with the Kansas Applied Remote Sensing Program, draws on his Kansas agricultural background while helping produce the GreenReport. This bi-weekly map series measures crop conditions and growth, and provides farmers information to help guide their operations. "Farmers have to rely on a lot of information. Producers can use the information we provide to give them a better feel for what the overall crop will be like, and hopefully that will help them to make better marketing decisions," Kastens said. For more, or to hear the original broadcast, visit www.researchmatters.ku.edu.

BOOKSHELF



BLUE BRITAIN: In her new book "How Britain Got the Blues: Transmission and Reception of the Blues Style in the British Isles," **Roberta Freund Schwartz**, associate professor of historical musicology, analyzes how and why the blues became a fundamental part of English popular music in the '60s. Schwartz explores not only the influences on British blues and blues-rock performers, but also maps the transmission of blues records to England to the development of the British blues subculture. Recently, the book was awarded Best History in the Best Research in Recorded

Blues, Rhythm and Blues or Soul Music category by the Association for Recorded Sound Collections.

WEB WORKS

KUTUBE: KU has launched its own YouTube channel at www.youtube.com/ku. The site features a wide variety of videos dealing with all things KU — academics, research, service, tradition and athletics. There is even a clip of Big Jay and Baby Jay strutting their stuff in a photo shoot fitting of the world's foremost supermodels. For more on the channel, or to submit a KU video of your own, contact Jack Martin, deputy director of University Communications, at jackm@ku.edu.



HEADLINERS

IT'S IN THE SOIL: **William Woods**, professor of geography, was quoted in an article in the September issue of National Geographic about soil in the southern hemisphere. The article discusses terra preta, or soil containing carbon. It's not known how much carbon can be stored in the soil, but Woods thinks it has great potential. "The world is going to hear a lot more about terra preta," he said.

FLOURIDE WORRIES: **John Duoll**, professor emeritus of pharmacology and toxicology at the KU Medical Center, was quoted in a recent story about potential dangers of fluoride in drinking water in PRInside.com. Duoll chaired a National Research Council

committee that reviewed literature showing links between fluoride and thyroid damage. "The thyroid changes do worry me," Duoll was quoted as saying.

SNAPPY SLOGANS: **Tim Bengtson**, associate professor of journalism, was quoted in an AZcentral.com story about the value of memorable slogans in a campaign. He gave Ronald Reagan's "Morning in America" as an example. "Voters want a nice distilled, essential message," he said. "What a nice picture that paints. It says there's reason for optimism. Everything's going to be OK, and I'm the guy who's going to make it OK."

CAMPUS CLOSEUP

Zanice Bond de Pérez

Writing specialist for graduate, international students

Years at current job: I was hired May 2008 after serving as the KU Writing Center's American Studies Graduate Writing Fellow for 2007-08.

Job duties: Some of my duties include providing specialty writing consultation services to graduate and international students, coordinating "Write-Ins" and graduate student writing groups, collaborating with other university wide programs that serve graduate and international students, and communicating with graduate student groups interested in customized workshops.

As a doctoral student you were a KU Graduate Writing Fellow. How did that experience prepare you or influence you to work full-time at the center? The writing fellow experience allowed me to study writing center pedagogy, interact with KU Writing Center staff, consult with KU students, visit classes across campus and design workshops. So, the experience provided an excellent foundation that allowed for a smooth transition into the writing specialist position. Plus, I am still a graduate student, and I am constantly surrounded by hard-working students whose efforts encourage and inspire me as a writer.

What unique challenges do graduate and international students face when it comes to academic writing? Graduate students must masterfully balance academic, family and work responsibilities. So, finding the time and space to write is sometimes a challenge. Plus, graduate students are often expected to write conference papers, journal articles, book reviews and fellow-



Chuck France/University Relations

Zanice Bond de Pérez is a writing specialist who works with graduate and international students at the KU Writing Center. She is a former writing center fellow and recently joined the staff full time.

ship applications. So they are constantly broadening and sharpening their writing skills. Many international students whose funding comes from their home governments also have the added pressure to complete their studies in a timely manner. Also, for many international students, becoming familiar with academic writing expectations within a U.S. context is a challenge since different educational systems have different expectations. For example, in some countries that are more communal-based, plagiarism is defined differently.

What aspects of your job might others not realize you're involved with? The research

component of the job is perhaps less visible. Next month the assistant director and I will present at the International Writing Center Association's conference. We'll be focusing on anti-racism in the Writing Center.

Good writing can obviously help improve a student's grade, but what other benefits can it have? Writing is a tool for learning and self-expression. When we write, we crystallize our thinking. Writing helps to empower and document.

Good writing improves grades, but it enriches our personal, professional, political and social selves.



for the full interview

CAMPUS ROUNDUP

KU MEDICAL CENTER: Jeannine Goetz, a dietetics and nutrition researcher at the KU Medical Center, has explored what barriers are commonly faced by food-insecure individuals and what impact this has on physical and mental health. "Unlike Third World countries, where food insecurity is associated with wasting and malnutrition, the trend in developed nations is actually toward obesity," says Goetz. "Individuals with a limited budget often load up on high-calorie foods that lack nutritional value when they have the opportunity to go shopping." Food insecurity, or the limited or uncertain availability of food, is becoming more common with a declining economy and rising food prices.

KU SCHOOL OF MEDICINE-WICHITA: Robert

Cusick, a Wichita doctor, will present "Arthritis: How Do I Know and What Do I Do?" Oct. 7 at the KUSM-W Sunflower room as part of the Live and Learn lecture series. He will answer questions about arthritis, treatment options and whether or not sufferers are destined to live a life filled with pain. For more information, call 316-293-2643.

EDWARDS CAMPUS: The Brasil Guitar Duo will perform at 7 p.m. Oct. 14 at the Edwards Campus. The event, presented by the Lied Center, is free and open to the public. The duo has a broad repertoire of classical guitar, as well as traditional Brazilian music. For more information, call 913- 897-8400.

SNAPSHOTS

E-mail photos for snapshots to oread@ku.edu. Be sure to include names of individuals in the photo.



Submitted/Keith Yehle

Chancellor Robert Hemenway recently paid a visit to Brig. Gen. Clyde "Butch" Tate, a KU alum, commanding general of the U.S. Army Legal Services Agency. Alums serving in the agency, from left: Lt. Col. John Lynch, Maj. Dolly R. (Gray) Livingston, Lt. Col. Charlotte (Ross) Herring, Tate, Maj. Lisa Gumbs and Maj. Janine (Butts) Hamby greeted him.



Submitted/Anita Herzfeld

Anita Herzfeld, professor of Latin American studies, center, recently attended the 50th anniversary celebration of the KU-University of Costa Rica program. She's pictured above with Vallie Portuguese Hogan and Justin Hung.



Megan McAtee/University Relations

Bill Steele, administrative associate senior, Research and Graduate Studies, shakes hands with Adrian Lewis, director of the office of Professional Military Graduate Education. A reception was held recently to honor Steele, who has been deployed to Afghanistan.

campus news

TOPONYMS: Denver communications billionaire Phillip Anschutz, a 1961 alumnus, and his wife, Nancy, gave a \$6.5 million endowed acquisitions fund for the new library that KU planned to build near the then Hoch Auditorium. In return, the library, dedicated Oct. 7, 1989, was named for his parents, Marian and Fred Anschutz, a 1933 alumnus. Fred also was chief donor for the Anschutz Sports Pavilion, which houses track, soccer, baseball and softball practice areas. For more, visit www.buildings.ku.edu.

Energy council formed; initial focus on research, industry

The KU Energy Council, a recently formed collaboration of energy-related research units on the Lawrence campus, will make its official launch with a conference from 8:30 a.m. to 4:30 p.m. Nov. 5 at the Adams Alumni Center. The theme of the conference is "Energy, Innovation and the Kansas Economy."

The primary focus of the conference — biofuels — will be addressed from four angles: research, development, trends in innovation and the future growth of the industry. Presenters will include state and federal officials, as well as KU leaders in all areas of energy-related research. The event is free and open to the public.

The federal vision of the future of energy research and how it will affect industry will be presented by Valri Lightner of the Department of Energy Biomass

Program; William Hagy, the U.S. Department of Agriculture's deputy administrator for rural development; and Bob Noun of the National Renewable Energy Laboratory.

State perspectives on how energy research will affect Kansas will be offered by Adrian Polansky, secretary of agriculture; Bret Healy, director of bioenergy for the Kansas Bioscience Authority; and Doug Rivers, vice president of research development for ICM, a bioenergy company headquartered in Colwich. Laurence Weatherley, chair of the KU Energy Council, will be joined on a discussion panel by Bob Honea, director of the KU Transportation Research Institute, and Bala Subramaniam, director of the Center for Environmentally Beneficial Catalysis. The panel will present the KU perspective on energy research, specifics

about biofuels research efforts at KU and collaboration with industry.

"This first conference is designed specifically for Kansas companies, university researchers, government agencies and elected officials," Weatherly said. "All of us have a common interest: advancing the energy industry via research and development and innovation."

The conference is unique, he added, in that the topics provide an opportunity to better understand national research and development initiatives and how they can translate into innovation in the energy industry and growth in the Kansas economy. For more information about the conference and the council, or to RSVP, visit www.kuenergycouncil.ku.edu.



David McKinney/University Relations

Faculty and staff learn about wheat harvesting at the farm of Don Steeples, senior vice provost, near Palco as part of the Wheat State Whirlwind Tour. The Steeples farm will be one of many remote locations of study as part of a new interdisciplinary grant that will study the effects of climate change.

New program to study wide-reaching effects of climate change

A groundbreaking new training program for graduate students at KU is exploring the impact of climate change on Earth's biology, ecology and social systems. Known as C-CHANGE (Climate Change, Humans, and Nature in the Global Environment), the program's goal is to develop experts in science, engineering and policy who will become tomorrow's leading voices on the "grand challenge" of climate change.

The debut C-CHANGE class began this fall for an initial cohort of five trainees who are graduate students in biology, geography, geology, public administration and sociology.

"This is a program for students who are in doctoral programs now, but who wish to make their training more interdisciplinary, focusing on global climate change," said Joane Nagel, University Distinguished Professor of Sociology, who is heading C-CHANGE. "Students will take classes that will be taught by geoscientists, social scientists, engineers and bioscientists. They will come away with their own disciplinary training, but also with coursework, ideas and perspectives that combine all of these disciplines."

A \$3 million Integrative Graduate Education and Research Traineeship grant from

the National Science Foundation is funding the new program, the first such grant awarded in the state of Kansas. Over the next five years, 22 doctoral students will complete the C-CHANGE curriculum to receive a special certification on their doctoral degrees. Still more students will have access to courses and activities of the program as IGERT associates.

C-CHANGE trainees will roam the globe to better grasp implications of Earth's changing environment. Fieldwork destinations for the students include communities in Kansas, a retreating ice sheet in Greenland and a changing monarch butterfly habitat in Mexico. In their courses and fieldwork, trainees will get hands-on research experiences and cross-disciplinary skills.

"Climate change is a global phenomenon and the way scientists study it varies according to where you are in the world," said Nagel. "These different settings allow different kinds of data to be collected and different understandings of how climate change is going to shape local systems."

The program extends beyond KU to include faculty, students and facilities at Haskell Indian Nations University where students and researchers will work together on projects investigating climate change in indigenous communities.



Johnson County voters to decide on 'Research Triangle' measure

Sales tax could raise \$15 million annually

In less than one month, KU will know where its immediate future lies for the Edwards Campus and its efforts to bring stage one clinical cancer trials to the KU Medical Center.

On Election Day, Nov. 4, Johnson County residents will vote on an issue known as the Johnson County Education Research Triangle, commonly referred to as the Triangle, a partnership of KU, Kansas State University and Johnson County.

"The Johnson County Research Triangle is an opportunity not only to be an economic boon to the area, but also to improve the health and well-being of all Kansans," said Chancellor Robert Hemenway. "Some of the brightest minds in the state would be working together to tackle some of the most important issues of the day. The possibilities of what we could accomplish together are endless."

The initiative would create an economic stimulus of more than \$1.4 billion in the next two decades, intended to create a higher quality of life for area residents. New facilities would provide cancer research, food safety and animal health research, and business, engineering, science and technology degrees.

The three points of the Triangle include the KU Cancer Clinical Research Center in Fairway, the K-State National Food and Animal Health Institute in Olathe and KU's Edwards Campus in Overland Park.

For the Edwards Campus, the initiative includes expansion of 10 undergraduate and graduate degree programs in business, engineering, science and technology enriching a workforce that will attract and retain businesses. Research shows that, on average, there are 1,500 open jobs per week in these sectors.

The Edwards Campus' role also would enhance the growing relationship with Johnson County Community College, creating a seamless transition for adult learners from two-year programs

at the community college to bachelor's and master's programs at the Edwards Campus.

Expansion of KU's Cancer Clinical Research Center would be a major step toward winning comprehensive cancer center designation from the National Cancer Institute. The center would provide more treatment options to citizens in Kansas, decreasing out-of-state travel in order to receive the latest cancer treatments. It would unlock millions of dollars in private and public donations and research grants.

"Johnson County has the opportunity to develop a 21st-century workforce, become a national competitor with economic viability for years to come and be a national leader in the treatment of cancer if proposition two passes," said Bob Clark, vice chancellor for the Edwards Campus.

Voters will decide if a sales tax increase of 1/8 cent — about \$15 million a year — will be invested in the research potential of Johnson County. To learn more about the Triangle initiative, visit www.JoCoTriangle.com.

KUDOS

A sculpture by **David Vertacnik**, associate professor of design, was recently shown by the Rocky Mountain College of Art and Design. The piece was placed outside the Phillip J. Steele Gallery on the college's campus. The piece, titled "SEED," was selected from the exhibit "Paralleled: The Earthly and the Ethereal" that took place May 23-July 19.

Geraldo U. de Sousa, associate professor of English, presented the paper "Shakespeare's Othello, Caravaggio and the Edge of Darkness" at the 11th annual Congress of the Mediterranean Studies Association, May 28-31 in Lüneburg, Germany.

An article by **Doreen Fowler**, professor of English, titled "Beyond Oedipus: Lucas Beauchamp, Ned Barnett and Faulkner's Intruder in the Dust," was

published in the December 2007 issue of *Modern Fiction Studies*. Additionally, Fowler presented the paper "Flannery O'Connor and the Problem of Domination" at the American Literature Association Conference in May in San Francisco.

Richard Hardin, professor of English, presented "Marlowe Thinking Globally" at the International Marlowe Conference July 1 in Canterbury, England.

Charles C. Eldredge, the Hall Distinguished Professor of American Art and Culture, recently participated in the "Words Matter!" symposium at the Smithsonian American Art Museum in Washington, D.C. The program marked the 20th anniversary of the Smithsonian's Charles C. Eldredge Prize for Distinguished Scholarship in

American Art and assembled 14 winners of the award. The prize, awarded annually for the outstanding book on the subject, was established in honor of the museum's former director when he left the Smithsonian to join the KU faculty in 1988.

Irina Six, lecturer in Slavic languages and literatures, was a presenter on the panel "Doing Business in Eastern Europe," sponsored by the International Trade Council of Greater Kansas City. The panel took place Oct. 1 in Kansas City, Mo.

Jeremy Shellhorn, assistant professor of design, recently designed a poster for the AIGA's Get Out the Vote initiative that was featured in *Print*, a bimonthly magazine about visual culture and design. Shellhorn was also interviewed for the feature, which

focused on how designers have had the opportunity to express their political opinions in this election year in ways they never have had before.

David Bergeron, professor of English, presented the paper "Shakespeare's Letters: Troilus and Cressida" at the 11th annual Congress of the Mediterranean Studies Association, held May 28-31 in Lüneburg, Germany.

Brian Harries, lecturer in English, presented the paper "His Nature is Too Noble for the World: Action and Speech as Roman Identity in Julius Caesar and Coriolanus" at the 11th annual Congress of the Mediterranean Studies Association, held May 28-31 in Lüneburg, Germany.

ku calendar



BILL T. JONES/ARNIE ZANE
DANCE COMPANY

LIED CENTER
OCTOBER 10

OCTOBER 6 - 19

6 Monday

Public event. All Majors Senior Day. 8:15 a.m. Kansas Union. \$15. Sponsored by Office of Admissions and Scholarships. Call 864-3911.

Student group event. Brazilian Week. Presenter Filipe Balestra. 12:30 p.m. Wescoe Hall auditorium. Free. Sponsored by Student Involvement and Leadership Center. Call 727-8928.

Osher Institute seminar. Don't Bug Me. Elizabeth Wenske-Mullinax and David Pendergrass. 2 p.m. Edwards Campus, 12600 Quivira Road, Overland Park. Sponsored by Continuing Education. Call 864-5823.

Lecture. Linguistics Colloquy. Four-year-olds generalize phonotactic probabilities from ambient speech. Peter Richtsmeier. 3:30 p.m. 206 Blake Hall. Free. Sponsored by Department of Linguistics. Call 864-3450.

Workshop. EndNote: Power Hour. 4:30 p.m. Instruction Center, Anschutz Library. Sponsored by Instructional Services. Call 864-0410.

Lecture. Hallmark Design Symposium Series. Filipe Balestra, visual communications/graphic design. 6 p.m. 3139 Wescoe Hall. Free. Sponsored by Department of Design. Call 864-9472.

Public event. Evolution for Everyone: How Darwin's Theory Can Change the Way We Think About Our Lives. David Sloan Wilson. 7 p.m. 106 Spooner Hall. Free. Sponsored by the Commons. Call 864-2343.

Seminar. NOT Over the Hill at 50: Sexuality and Relationships in the Lives of Older Adults. Dennis Dailey, professor emeritus of social welfare. 7 p.m. Continuing Education, 1515 St. Andrews Dr. Sponsored by Continuing Education. Call 864-5823.

Concert. KC Symphony String Trio Ensemble. 7 p.m. Regnier Hall auditorium, Edwards Campus, 12600 Quivira Road, Overland Park. Free. Sponsored by Edwards Campus. Call (913) 897-8400.

Public event. Debate: Jenkins and Boyda. 7 p.m. Dole Institute of Politics. Free. Sponsored by Dole Institute of Politics. Call 864-4900.

John F. Eberhardt Memorial Lecture. Literacies of a Lifetime: Literature, Ethnicity, Code. Keith Gilyard, Penn State. 7:30 p.m. Alderson Auditorium, Kansas Union. Free. Sponsored by Department of English. Call 864-2519.

7 Tuesday

Workshop. PowerPoint 2003: Intermediate. 9 a.m. Budig PC Lab. Sponsored by Instructional Services. Call 864-0410.

Workshop. Conducting Faculty Searches. 10 a.m. 258 Strong Hall. Free. Sponsored by Human Resources and Equal Opportunity. Call 864-4946.

Lecture. The Historical Precedents behind the Russian-Georgian Conflict. Maj. (P) Ray

Hackler, Battle Command Training Program, Fort Leavenworth. Noon. 318 Bailey Hall. Free. Sponsored by Center for Russian, East European and Eurasian Studies. Call 864-4248.

Student group event. Federalist Society. The United States Supreme Court: A Preview of Next Term. Allyson Ho. 12:30 p.m. McCook Room, Burge Union. Free. Sponsored by Student Involvement and Leadership Center. Call (913) 484-1290.

Student group event. Brazilian Week. Feijoada fundraiser. 1 p.m. ECM Center, 1204 Oread Ave. Free. Sponsored by Student Involvement and Leadership Center. Call 727-8928.

Osher Institute seminar. Cognition and Aging. Susan Kemper, the Roy A. Roberts Distinguished Professor of Psychology. 2 p.m. Ninth Street Missionary Baptist Church, 847 Ohio St. Sponsored by Continuing Education. Call 864-5823.

Workshop. Dreamweaver: Visual Design using CSS. 2 p.m. Budig PC Lab. Sponsored by Instructional Services. Call 864-0410.

Lecture. Evolving the Future: Toward a Science of Intentional Cultural Change. David Sloan Wilson. 2:30 p.m. 2092 Dole Human Development Center. Free. Sponsored by the Commons. Call 864-9818.

Governance. SenEx. 3:30 p.m. Provost Conference Room, Strong Hall. Free. Sponsored by University Governance. Call 864-5169.

Meeting. Introduction to Research for New Faculty. Joshua Rosenbloom. 3:30 p.m. First-floor conference room, Multidisciplinary Research Building. Free. Sponsored by Office of the Vice Provost for Research and Graduate Studies. Call 864-3567.

Ceremony. Kemper awards program. 4 p.m. Woodruff Auditorium, Kansas Union. Free. Sponsored by Office of the Chancellor. Call 864-3131.

Lecture. Study group with Dole Fellow Joe Gaylord. Recipes for Success: The Habits and Skills of Winning a Campaign. 4 p.m. Dole Institute of Politics. Free. Sponsored by Dole Institute of Politics. Call 864-4900.

Meeting. Goldwater Scholarship information session. 4 p.m. Nunemaker Center. Sponsored by University Honors Program. Call 864-4225.

Public event. Town Hall Meeting: Research and Education Triangle. Bob Clark, vice chancellor. 6:30 p.m. Regnier Hall auditorium, Edwards Campus, 12600 Quivira Road, Overland Park. Free. Sponsored by Edwards Campus. Call (913) 897-8411.

Public event. Etiquette Dinner. 6:30 p.m. Malott and Kansas rooms, Kansas Union. \$15. Sponsored by Student Involvement and Leadership Center. Call 864-3624.

Film. Turkish Film Series. The Bandit. 7 p.m. 318 Bailey Hall. Free. Sponsored by Center for Russian, East European and Eurasian Studies. Call 864-4236.

Concert. Jazz Ensembles I, II and III. 7:30 p.m. Lied Center. \$7 adults, \$5 students and seniors. Sponsored by Department of Music and Dance. Call 864-2787.

Lecture. The Post-World War II Conservative Intellectual Movement in America. George H. Nash. 7:30 p.m. Conference Hall, Hall Center. Free. Sponsored by Hall Center for the Humanities. Call 864-4798.

8 Wednesday

Workshop. People Admin Hiring Manager Training. 8:30 a.m. 31 Carruth-O'Leary Hall. Free. Sponsored by Human Resources and Equal Opportunity. Call 864-4946.

Workshop. Blackboard Strategies and Tools. 9 a.m. 6 Budig Hall. Sponsored by Instructional Services. Call 864-0410.

Workshop. Access 2007: What's New. 9 a.m. Budig PC Lab. Sponsored by Instructional Services. Call 864-0410.

Governance. University Support Staff Senate. 10:30 a.m. International Room, Kansas Union. Free. Sponsored by University Support Staff Senate. Call 864-4089.

Workshop. Word 2003: Long Documents. 11:30 a.m. Budig PC Lab. Sponsored by Instructional Services. Call 864-0410.

Lecture. University Forum. The ECM: Architectural Icon and Its Historical Significance for Our Community. Tom Harper, Lawrence Modern, and Leslie Tuttle, assistant professor of history. Noon. ECM Center, 1204 Oread Ave. Free. Sponsored by Ecumenical Christian Ministries. Call 843-4933.

Interdisciplinary Graduate Research Workshop. City as Interdisciplinary Intertext in Russian Literature. Sidney Dement. 12:30 p.m. Seminar Room, Hall Center. Sponsored by Hall Center for the Humanities. Call 864-4798.

Seminar. Why Does It Hurt? New Discoveries in Chronic Pain Management. Dr. Robert Twillman, director, Pain Management Program, KU Hospital. 2 p.m. Continuing Education, 1515 St. Andrews Dr. Sponsored by Continuing Education. Call 864-5823.

Workshop. Research Administration 101: Guide to the Administration of Sponsored Projects at KU. 2:30 p.m. Apollo Room, Nichols Hall. Sponsored by Office of the Vice Provost for Research and Graduate Studies. Call 864-4148.

Workshop. Best Practices/Security Awareness. 3 p.m. Budig PC Lab. Sponsored by Instructional Services. Call 864-0410.

Lecture. Study group with Dole Fellow Ray Strother. 4 p.m. Dole Institute of Politics. Free. Sponsored by Dole Institute of Politics. Call 864-4900.

Student group event. Chabad. Kol Nidrei service. 6:30 p.m. Jayhawk Room, Kansas Union. Sponsored by Student Involvement and Leadership Center. Call 832-8672.

Student group event. Two Brothers Foundation/Club Brazil. Brazilian fundraising dinner. 6:30 p.m. ECM Center, 1204 Oread Ave. \$5. Sponsored by Student Involvement and Leadership Center. Call 218-3016.

Volleyball. KU vs. Texas A&M. 7 p.m. Horejsi Family Athletics Center. Sponsored by Department of Athletics. Call 800-344-2957.

Public event. One Month Out: Strategists Look at Obama-McCain. 7:30 p.m. Dole Institute of Politics. Free. Sponsored by Dole Institute of Politics. Call 864-4900.

Concert. Undergraduate Honors Recital. 7:30 p.m. Swarthout Recital Hall, Murphy Hall. Free. Sponsored by Department of Music and Dance. Call 864-3436.

9 Thursday

Workshop. Dreamweaver: Getting Your Site Under Control. 8:30 a.m. Budig PC Lab. Sponsored by Instructional Services. Call 864-0410.

Workshop. Conducting Unclassified and USS Searches. 9 a.m. 103B Carruth-O'Leary Hall. Free. Sponsored by Human Resources and Equal Opportunity. Call 864-4946.

Student group event. Chabad. Holiday service. 9:30 a.m. Jayhawk Room, Kansas Union. Sponsored by Student Involvement and Leadership Center. Call 832-8672.

Lecture. Senior Session. The Venetian. 10 a.m. Spencer Museum of Art. Sponsored by Spencer Museum of Art. Call 864-4710.

Workshop. Word 2003: Document Enhancement Features. 10:30 a.m. Budig PC Lab. Sponsored by Instructional Services. Call 864-0410.

Public event. KU Energy Fair. 11 a.m. Lawn, Stauffer-Flint Hall. Free. Sponsored by Center for Sustainability. Call 864-5804.

Seminar. Merienda Brown-Bag. Finding Meaning in Chaos: An Ecological, Symbolic and Material Investigation of Chronic Illness in a Maya Village. James Herynk, doctoral student in anthropology. Noon. 318 Bailey Hall. Free. Sponsored by Center of Latin American Studies. Call 864-4213.

Governance. Unclassified Senate meeting. Noon. 350 Spencer Research Library. Free. Sponsored by Unclassified Senate. Call 864-8860.

Public event. Tea at Three. 3 p.m. Lobby, Kansas Union. Free. Sponsored by Student Union Activities. Call 864-SHOW.

Seminar. Come to Africa and it is here! Shawn Leigh Alexander. 3:30 p.m. International Room, Kansas Union. Sponsored by Kansas African Studies Center. Call 864-3745.

Lecture. Tea and Talk. Modern Bridges of China. Yong Bai, associate professor of civil, environmental and architectural engineering. 4 p.m. Centennial Room, Kansas Union. Free. Sponsored by Center for East Asian Studies. Call 864-1457.

Public event. Biology Career Night. 6:30 p.m. 1005 Haworth Hall. Sponsored by Division of Biological Sciences. Call 864-5885.

Film. Alex Gibney's Taxi to the Dark Side. 7:30 p.m. Woodruff Auditorium, Kansas Union. Free. Sponsored by Student Union Activities. Call 864-SHOW.

Play. A Flea in Her Ear. 7:30 p.m. Crafton-Preyer Theatre, Murphy Hall. \$10-\$16. Sponsored by University Theatre. Call 864-3982.

Lecture. An Evening with Alex Graves. 7:30 p.m. Herk Harvey Sound Stage, Oldfather Studios. Free. Sponsored by Department of Theatre and Film. Call 864-1353.

Concert. KU Percussion Ensemble. 7:30 p.m. 130 Murphy Hall. Free. Sponsored by Department of Music and Dance. Call 864-3436.

10 Friday

Public event. Business Senior Day. Registration required. 8:15 a.m. Kansas Union. \$15. Sponsored by Office of Admissions and Scholarships. Call 864-3911.

Panel discussion. Town and Gown Forum. Time/Frame. 10 a.m. Central Court and gal-

leries, Spencer Museum of Art. Sponsored by Spencer Museum of Art. Call 864-4710.

Seminar. The 2008 Election. Jonathan Earle. Noon. 116 Sabatini Multicultural Resource Center. Free. Sponsored by Unclassified Senate. Call 864-8860.

Performance and Culture Seminar. Theatre/Performance, Empathy and Cognitive Neuroscience. Rhonda Blair. 12:30 p.m. Seminar Room, Hall Center. Sponsored by Hall Center for the Humanities. Call 864-4798.

Public event. Difficult Dialogues: Race, Education and American Politics. The Impact of Race on Education. An uncompetitive debate between KU and Texas Southern University. 3:30 p.m. The Commons, Spooner Hall. Sponsored by Hall Center for the Humanities. Call 864-4798.

Nature and Culture Seminar. The Motorcar and the Landscape Gardening Critic. Judith Major. 3:30 p.m. Seminar Room, Hall Center. Sponsored by Hall Center for the Humanities. Call 864-4798.

American/Gender Seminar. There's A Spirit That Transcends the Border: Religious Mobilizations for Immigrant Rights. Pierrette Hondagneu-Sotelo. 3:30 p.m. Conference Hall, Hall Center. Sponsored by Hall Center for the Humanities. Call 864-4798.

Swimming. KU vs. Intrasquad. 4 p.m. Robinson Center. Sponsored by Department of Athletics. Call 800-344-2957.

Film. Friday Night at the Kino. Film No. 1 Master and Margarita Part No. 3. Bill Comer. 7 p.m. 318 Bailey Hall. Free. Sponsored by Center for Russian, East European and Eurasian Studies. Call 864-4248.

Dance. Bill T. Jones/Arnie Zane Dance Co. in "A Quarrelling Pair." 7:30 p.m. Lied Center. \$35/\$25 public, \$18/\$13 students. Sponsored by Lied Center of Kansas. Call 864-2787.

Lecture. Recipe for a Galaxy Cluster. Greg Rudnick, assistant professor of physics and astronomy. 7:30 p.m. 2001 Malott Hall. Free. Sponsored by Department of Physics and Astronomy. Call 864-4626 or 864-1225.

Play. A Flea in Her Ear. 7:30 p.m. Crafton-Preyer Theatre, Murphy Hall. \$10-\$16. Sponsored by University Theatre. Call 864-3982.

Film. Wanted. 8 p.m. Woodruff Auditorium, Kansas Union. Sponsored by Student Union Activities. Call 864-SHOW.

Entertainment. Cosmic bowling. 10 p.m. Jaybowl, Kansas Union. Sponsored by Student Union Activities. Call 864-SHOW.

11 Saturday

Football. Game Day at the Adams tailgate. 8:30 a.m. Adams Alumni Center. \$10 members, \$20 nonmembers. Sponsored by KU Alumni Association. Call 864-4760.

Social event. Pre-game Party. 9 a.m. Kansas Union. Free. Sponsored by KU Memorial Unions. Call 864-2471.

Football. KU vs. Colorado. 11:30 a.m. Memorial Stadium. \$55. Sponsored by Department of Athletics. Call 800-344-2957.

Play. A Flea in Her Ear. 7:30 p.m. Crafton-Preyer Theatre, Murphy Hall. \$10-\$16. Sponsored by University Theatre. Call 864-3982.

Film. Wanted. 8 p.m. Woodruff Auditorium, Kansas Union. Sponsored by Student Union Activities. Call 864-SHOW.

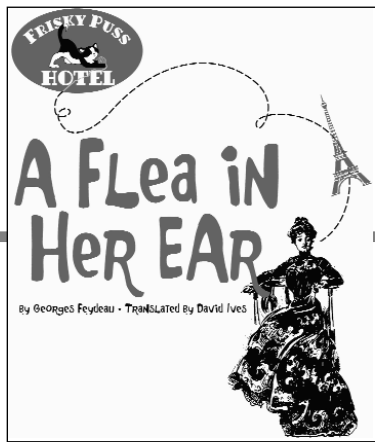
Entertainment. Cosmic bowl-

KU ticket offices

Lied Center of Kansas
(785) 864-ARTS (2787)

Murphy Hall
(785) 864-3982

SUA, Kansas Union
(785) 864-3477



A FLEA IN HER EAR
PRESENTED BY UNIVERSITY THEATRE
OCTOBER 9, 10 AND 11

ing. 10 p.m. Jaybowl, Kansas Union. Sponsored by Student Union Activities. Call 864-SHOW.

12 Sunday

Concert. Brasil Guitar Duo. Synchronistic virtuosos. 2 p.m. Lied Center. \$24/\$18 public, \$12/\$9 students. Sponsored by Lied Center of Kansas. Call 864-2787.
Public event. CLAS ACTS: The Audacity of Hope or a Maverick You Can Trust. 2 p.m. Spooner Hall. Free. Sponsored by College of Liberal Arts and Sciences. Call 864-1767.
Carillon concert. Elizabeth Berghout. 5 p.m. Memorial Campanile. Free. Call 864-4464.
Public event. Women Running for Office. 5:30 p.m. Dole Institute of Politics. Free. Sponsored by Dole Institute of Politics. Call 864-4900.
Concert. Instrumental Collegium Musicum. 7:30 p.m. Swarthout Recital Hall, Murphy Hall. Free. Sponsored by Department of Music and Dance. Call 864-3436.

13 Monday

Public event. All Majors Senior Day. 8:15 a.m. Kansas Union. \$15. Sponsored by Office of Admissions and Scholarships. Call 864-3911.
Seminar. New Staff Orientation. 8 a.m. 204 Joseph R. Pearson Hall. Free. Sponsored by Human Resources and Equal Opportunity. Call 864-4946.
Public event. Jesse B. Sample Brownbag Series. Barack Obama's Candidacy: America, Race and the Historical Moment. 11:30 a.m. Woodruff Auditorium, Kansas Union. Free. Sponsored by Langston Hughes Center. Call 864-5044.
Lecture. Larry Scarpa, architect. 11:30 a.m. Swarthout Recital Hall, Murphy Hall. Free. Sponsored by School of

Architecture and Urban Planning. Call 864-3709.
Osher Institute seminar. Don't Bug Me. Elizabeth Wenske-Mullinax and David Pendergrass. 2 p.m. Edwards Campus, 12600 Quivira Road, Overland Park. Sponsored by Continuing Education. Call 864-5823.
Lecture. KATYN — A Stalinist Crime: The Massacre of Polish Prisoners of War in the USSR, spring 1940. Anna Cienciala, professor emerita of history. 3:30 p.m. Conference Hall, Hall Center. Free. Sponsored by Hall Center for the Humanities. Call 864-4798.
British Seminar. What Does a Fetish Want? or, Romanticism, the Object and the Poetics of Interruption. Sonia Hofkosh. 3:30 p.m. Seminar Room, Hall Center. Sponsored by Hall Center for the Humanities. Call 864-4798.
Concert. Women's Chorale, Ad Astra Singers and Oread Singers. 7:30 p.m. Swarthout Recital Hall, Murphy Hall. Free. Sponsored by Department of Music and Dance. Call 864-3436.

14 Tuesday

Workshop. Blackboard Strategies and Tools. 9 a.m. 6 Budig Hall. Sponsored by Instructional Services. Call 864-0410.
Student group event. Federalist Society: The Aftermath of DC v. Heller: Should We Care About Gun Control? Joyce Malcolm, George Mason University. 12:30 p.m. Drive Room, Burge Union. Free. Sponsored by Student Involvement and Leadership Center. Call (913) 484-1290.
Seminar. Cognition and Aging. Susan Kemper, the Roy A. Roberts Distinguished Professor of Psychology. 2 p.m. Continuing Education, 1515 St. Andrews Dr. Sponsored by Continuing Education. Call 864-5823.
Governance. FacEx. 3 p.m. Provost Conference Room, Strong Hall. Free. Sponsored by University Governance. Call 864-5169.
Workshop. Dreamweaver:

Working in Code View. 3 p.m. Budig PC Lab. Sponsored by Instructional Services. Call 864-0410.
Before 1500 Seminar. Beards, Clocks and the Angel with the Sundial at Chartres Cathedral. Valija Evalds. 3:30 p.m. Seminar Room, Hall Center. Sponsored by Hall Center for the Humanities. Call 864-4798.
Lecture. Study group with Dole Fellow Joe Gaylord. 4 p.m. Dole Institute of Politics. Free. Sponsored by Dole Institute of Politics. Call 864-4900.
Lecture. Brazilian Cinema and Global Hollywood. Randal Johnson, University of California-Los Angeles. 5 p.m. Conference Hall, Hall Center. Sponsored by Hall Center for the Humanities. Call 864-4798.
Lecture. Hunger Banquet. 6 p.m. Big 12 Room, Kansas Union. Free. Sponsored by Student Union Activities. Call 864-SHOW.
Concert. Brasil Guitar Duo, presented by the Lied Center. 7 p.m. Regnier Hall auditorium, Edwards Campus, 12600 Quivira Road, Overland Park. Free. Sponsored by Edwards Campus. Call (913) 897-8400.
Lecture. Erasmus and Voltaire: Why They Still Matter. Ricardo Quinones, Claremont McKenna College. 7:30 p.m. Pine Room, Kansas Union. Free. Sponsored by Humanities and Western Civilization. Call 864-3011.
Concert. Men's Glee and Vocal Collegium Musicum. 7:30 p.m. Swarthout Recital Hall, Murphy Hall. Free. Sponsored by Department of Music and Dance. Call 864-3436.
Concert. Jazz Combos. 7:30 p.m. Lawrence Arts Center, 940 New Hampshire St. Free. Sponsored by Department of Music and Dance. Call 864-3436.

15 Wednesday

Workshop. Windows: Vista. 9 a.m. Computer Center auditorium. Sponsored by Instructional Services. Call 864-0410.
Lecture. University Forum. The Mental Lexicon as a Network of Words. Michael S. Vitevitch, assistant professor of psycholo-

gy. Noon. ECM Center, 1204 Oread Ave. Free. Sponsored by Ecumenical Christian Ministries. Call 843-4933.
Workshop. Access 2003: Forms. 1 p.m. Budig PC Lab. Sponsored by Instructional Services. Call 864-0410.
Osher Institute seminar. Papyrus, Parchment, Paper: A Brief History of Map-Making. Barbara Backus McCorkle. 2 p.m. Spencer Research Library. Sponsored by Continuing Education. Call 864-5823.
Workshop. Research Administration 101: Guide to the Administration of Sponsored Projects at KU. 2:30 p.m. Apollo Room, Nichols Hall. Free. Sponsored by Office of the Vice Provost for Research and Graduate Studies. Call 864-4148.
Public event. The Final Debate: What Do the Undecideds Think? 7:30 p.m. Dole Institute of Politics. Free. Sponsored by Dole Institute of Politics. Call 864-4900.
Public event. Caf Castellano. 7:30 p.m. Henry's, 11 E. Eighth St. Free. Sponsored by Student Involvement and Leadership Center. Call 224-9159.

16 Thursday

Academic date. Fall break begins.
Public event. Tea at Three. 3 p.m. Lobby, Kansas Union. Free. Sponsored by Student Union Activities. Call 864-SHOW.
Osher Institute seminar. Beyond Saris and Spice: The South Asian-American Experience. Jane Stock. 7 p.m. 155 Regnier Hall, Edwards Campus, 12600 Quivira Road, Overland Park. Sponsored by Continuing Education. Call 864-5823.

17 Friday

Conference. Perspectives on Psychology and the Law. Celebrating the contributions of Lawrence Wrightsman Jr. 9 a.m. Bruckmiller Room, Adams Alumni Center. Free. Sponsored

Calendar items....

are submitted by each department's calendar administrator. To become an administrator, visit www.calendar.ku.edu and click "request an account."

by Department of Psychology. Call 864-9815.
Soccer. KU vs. Texas A&M. 4 p.m. Jayhawk Soccer Complex. Sponsored by Department of Athletics. Call 800-344-2957.
Entertainment. Cosmic bowling. 10 p.m. Jaybowl, Kansas Union. Sponsored by Student Union Activities. Call 864-SHOW.

18 Saturday

Conference. Perspectives on Psychology and the Law. Celebrating the contributions of Lawrence Wrightsman Jr. 9 a.m. Bruckmiller Room, Adams Alumni Center. Free. Sponsored by Department of Psychology. Call 864-9815.
Workshop. Children's art appreciation class. It Starts With Art: What Lies Beneath. 10:30 a.m. and 1:30 p.m. Spencer Museum of Art. Sponsored by Spencer Museum of Art. Call 864-4710.
Volleyball. KU vs. Oklahoma. 7 p.m. Horejsi Family Athletics Center. Sponsored by Department of Athletics. Call 800-344-2957.
Play. The Late-Nite Horror Show by Nick Medved. 7:30 p.m. Lawrence Arts Center, 940 New Hampshire St. Free. Sponsored by English Alternative Theatre. Call 766-1997.
Entertainment. Cosmic bowling. 10 p.m. Jaybowl, Kansas Union. Sponsored by Student Union Activities. Call 864-SHOW.

19 Sunday

Academic date. Homecoming Week begins.
Academic date. Fall break ends.
Soccer. KU vs. Francis Marion. Noon. Jayhawk Soccer Complex. Sponsored by Department of Athletics. Call 800-344-2957.
Concert. Spencer Consort. 2:30 p.m. Spencer Museum of Art. Sponsored by Spencer Museum of Art. Call 864-4710.
Carillon Concert. Elizabeth Berghout. 5 p.m. Memorial Campanile. Free. Call 864-4464.

Employees urged to be vigilant during Cyber Security Awareness Month

The recent news story about vice presidential candidate Sarah Palin's e-mail being hacked should serve as a reminder not only that campaign season is in full swing, but that everyone needs to be vigilant when it comes to data security.

Julie Fugett, systems analyst with Information Services, her colleagues and the KU Privacy Office, say October, Cyber Security Awareness Month, is a

perfect time for KU employees to be aware the importance of information security.

"Privacy and security go hand in hand," said Jane Rosenthal, privacy coordinator. "By taking sound measures to increase cyber security, everyone can help protect the privacy of the information we work with here at KU."

IS is hosting a series of events with various campus units about data handling and encryption,

and is offering the sessions to any department that would like to host such a presentation. The office is also hosting a pair of workshops on best practices/security awareness and computer system hardening. The former is taking place at 3 p.m. Oct. 8 and the latter will be held at 10 a.m. Oct. 24. Both will be in the Budig Instruction Lab and are open to all faculty and staff. The staff is available to make the presenta-

tions throughout the year.

Naturally, IT has taken the security topic to the Web. A wealth of online resources exists to help users be secure. Fugett writes a blog, www.beseKUre.ku.edu, posts articles on security at www.twitter.com/besekure and started the Be Sekure Facebook group. Fugett said the sites offer easy to understand information for all computer users, and give tips on security

that don't take a tech professional to implement. There are also security tips at www.privacy.ku.edu and KU's information management policy is online at www.provost.ku.edu/policy/infomanagement. Information policies are also available at www.policy.ku.edu.

IT Security can also answer information safety questions. Questions can be directed to itsec@ku.edu or 864-9003.

Survey to gauge Oread readers' delivery preferences

University Relations is evaluating how Oread is delivered to readers. Technology, efforts to be environmentally responsible and numerous other factors have the ability to change the methods in which we present news of interest to KU employees. The following survey will help gauge attitudes toward the presentation of Oread, specifically employees' interest in both the print and online versions. The survey is available online at www.oread.ku.edu. You may also fill out this print survey and campus mail it to Mike Krings, University Relations, or send it by U.S. Mail to Oread, 11314 Jayhawk Blvd., Lawrence, KS 66045.

- | | | | |
|--|---------------------------|--|--|
| 1. Do you regularly read Oread? | Always Occasionally Never | 6. If Oread were delivered in the form of a PDF attached to an e-mail, would you open and read it? | of content and value to you, from 1 (none) to 5 (very)? |
| 2. Where do you typically read Oread? | Office Home Elsewhere | Yes No | 1 2 3 4 5 |
| 3. Do you read the print Oread or read it online at www.oread.ku.edu ? | Print Online | 7. If Oread were delivered in text form only in an e-mail, would you read it regularly? | 10. To get information about upcoming campus events, do you read: |
| 4. Do you read news mostly in print or online? | Print Online | Yes No | Calendar.ku.edu
The weekly e-mail calendar
Oread calendar
Other |
| 5. If Oread were only available electronically (online or e-mail), would you read it regularly? Yes No | | 8. If Oread changed its publication schedule, what day of the week would you prefer to receive it? (Please write response) | 11. Do you have any comments or suggestions about Oread? |
| | | 9. How would you rate Oread in terms | |

from one

SBC

Continued from Page 1

development resource for Kansas."

Combined, the two additions feature 44,000 square feet of space and were built at a total cost of \$22.2 million, with the KBA making a significant contribution. The rest was financed using state bonds backed by the KU Center for Research.

While SBC was built in four phases, the numbers have been "phased" out and the entire facili-

ty has a single name. The main entrance to the SBC is now on the west end, adjacent to the MRB parking lot, and opens into a two-story skylighted atrium surrounded by labs and offices for staff and students. Also nearby is the Park and Ride Lot, completed in 2006.

What might be next for west campus?

"KU needs additional modern lab space to support our growing research in drug development and delivery," said Warren. "There's still a large open field just south of SBC and MRB."

ENROLLMENT

Continued from page 1

American Indian/Alaskan Native, Asian, African-American or Latino.

Among first-time freshmen, minority enrollment increased 19.3 percent. Freshman African-American students increased by 27.8 percent and freshman Latino students increased by 23.4 percent, compared to fall 2007.

KU also increased the number of transfer students by 21 percent over fall 2007.



Lisa Kress

The overall enrollment at KU is a 2.9 percent increase over fall 2007. Enrollment at the KU Medical Center in Kansas City, Kansas, increased by 6.3 percent to a record 3,103. Multicultural enrollment at KUMC rose by 6.1 percent.

While some may be tempted to attribute the increase to KU's NCAA men's national basketball

Beneficial enrollment

Provost and Executive Vice Chancellor Richard Lariviere wrote about enrollment, its benefit to Kansas and the ongoing need for state support of higher in the Sept. 25 Kansas City Star. Visit www.kansascity.com/273/story/812262.html.

championship and the Orange Bowl championship, admissions director Lisa Kress said applications were higher all year and there was no spike in applications after these victories.

"These students were motivated by KU's strong academic rankings and overall reputation and were eager to attend KU before the athletic victories. KU is a great place to be," she said.

Hemenway agreed, saying: "Students come to the University of Kansas for the high-quality education. We have had many successes in classrooms, labs and offices on campus in addition to our athletic prowess. KU has an outstanding group of faculty, researchers and staff."

INSURANCE

Continued from page 1

tobacco-user status may result in loss of the employer contribution toward the health insurance premium for the remainder of the year.

OPEN ENROLLMENT

Open enrollment information was distributed through campus mail to benefits-eligible faculty and staff in early October. The information can also be found online at www.hreo.ku.edu.

Faculty and staff are encouraged to participate in Web open enrollment early in October in case assistance is needed with the password to access the State of Kansas Employee Self-Service Center at www.hreo.ku.edu. For benefits-related questions, contact the Human Resources Benefits Open Enrollment Hotline at 864-7402; visit 150 Carruth-O'Leary between 7:30 a.m. and 5 p.m. Monday through Friday; or e-mail benefits@ku.edu.

Faculty and staff are encouraged to attend one of the 1.5-hour open enrollment meetings where representatives from Kansas Health Policy Authority will present information, answer questions and hear concerns and feedback. The meetings are scheduled:

n 9 a.m. and 1 p.m., Oct. 9, Big 12 Room, Kansas Union

n 9 a.m. and 1 p.m., Oct. 15, 150, Joseph R. Pearson Hall

KHPA will also hold meetings in Lawrence for retirees who remain in the state of Kansas health plan at 9:30 a.m. and 1:30 p.m. Oct. 24 at the Douglas County Fairgrounds, 2101 Harper.

PREMIUMS

Superior Vision premiums, for both the basic and enhanced

plans, will not change for plan year 2009 but dental premiums will increase for part-time employees and those with dependent coverage.

For plan year 2008, 92 percent of KU faculty and staff enrolled in Blue Cross-Blue Shield Plan A. Those who remain enrolled in that plan and qualify for the non-tobacco user discount will see approximately a 5 percent increase in their 2009 premiums. Premium information for all plans can be found in the open enrollment booklet or at www.hreo.ku.edu.

The 2009 premiums are decreasing for all Plan B options and will be lower than Plan A premiums.

In addition to changes in premiums, KHPA has made changes to out-of-pocket expenses, including deductibles and copayments to both Plan A and Plan B that also should be considered when selecting a health plan. Additional information can be found in the open enrollment packet and online.

CHANGES FOR PLAN YEAR 2009

All Plan A, B and C policies cover the same benefits. The differences between the vendors offering the plans are the provider networks available, the ancillary services offered (Web site and discount programs) and the premiums. The three companies that offer Plan C each use a different vendor for their Health Savings Accounts.

No changes have been made for the Basic Vision Plan. The Enhanced Vision Plan will include a new benefit for contact lens fitting exam fees.

Tobacco control products will be covered up to a maximum plan payment of \$300 per member per year as part of the Prescription

Drug Plan.

PRIMARY CARE PROVIDERS

Continuing in Plan Year 2009, all of the plans are PPOs and use of a primary care physician is not required and individuals do not need a referral when seeking services. Instead, lower co-payments apply when using general practice, family practice, internal medicine, pediatrics, geriatrics and physician extenders (physician assistants and advance registered nurse practitioners). Using primary care network providers will result in the lowest out-of-pocket cost. Other network providers, who are not primary care type providers, will be considered specialists and a higher co-payment will be required. Using non-network providers will result in higher out-of-pocket costs. Preventive care services will not be covered for use of a non-network provider.

KHPA has indicated that each company's provider network will be used for both Plan A and Plan B. Employees should check the online provider directories or check directly with their providers to verify whether their preferred doctors/hospitals are included within a company's provider network, both within the State of Kansas and nationwide. Provider networks can change throughout the plan year.

PLANSELECT TOOL

PlanSelect, an online tool, is available to help employees pick a plan design, review the provider networks and review the ancillary services of each health plan to find a plan that best fits their needs. PlanSelect is available at www.hreo.ku.edu.

'Clickers' making noise in School of Education

By Doug Adams

This summer, the School of Education acquired a set of Activexpression learner response devices, commonly called "clickers." The clickers are slightly larger than a cell phone, with a keypad and a number of specialized buttons. With the devices, an instructor can survey a class, get responses from the participants and present the response data in real time. Results can be anonymous, or if the instructor assigns the devices to individual members of the class, responses can be logged and entered into a spreadsheet or database grading system.

The Activexpression software allows instructors to pre-plan surveys or to create ad-hoc questions as they present. Responses can be multiple choice (including multiple correct responses to a single

question), numeric or open text. Users can create Likert Scale surveys and questions where respondents need to arrange items into a correct order. All responses are sent using the handheld clickers in real-time. The keypad is identical to those on most cell phones, so students have little trouble entering text or numeric responses.

When all of the responses have been gathered, the data can be shown immediately in a variety of different graph styles. If the clickers are anonymously distributed, students won't know who gave what response, which encourages all students to participate.

The anonymous capability eliminates embarrassment about having a differing opinion or not knowing the correct answer. Every student in the class can respond and the instructor then knows

immediately if the class understands the material.

The clickers could also be assigned to individual students and even named, so responses can be logged. With the Activexpression software, the instructor can store student responses over time and save them to a database for use in a grade-book program.

The School of Education acquired 32 handheld clickers. Activexpression software can be installed on a laptop, allowing instructors to prepare surveys before beginning a presentation.

School of Education faculty or staff interested in learning how to use the Activexpression clickers in class should contact Frank Carey at fcarey@ku.edu for information about scheduling a training session.



The Activexpression learner response devices, or "clickers," have a large screen, an alphanumeric keypad like a cell phone, symbol entry buttons and eight hotkeys for multiple choice-type responses.

Dole Institute announces election-related slate of events

The Dole Institute of Politics has announced a series of election-related events this fall titled "POTUS 44 — The Next President of the United States." Each program will focus on an important facet of the 2008 presidential race. The programs will begin at 7:30 p.m. at the Dole Institute.

"We're delighted to have such a busy and focused fall," said Bill Lacy, director of the Dole Institute. "It's a presidential year, and it is a good opportunity to reach more students and members of the community while they

are focused on the Obama-McCain contest."

The series began in September with "Obama vs. McCain: Campaign 2008." The program featured 2008 Dole Fellows Joe Gaylord and Ray Strother. Gaylord is a top Republican strategist with a specialty in congressional races and was a top adviser to Newt Gingrich. Strother is a legendary Democratic political consultant who has worked with candidates at every level, including former Vice President Al Gore. Both fel-

lows are hosting study groups throughout the fall as well. See www.doleinstitute.org/programs-studygroups.shtml for more on the study groups.

"One Month Out: Strategists Look at Obama-McCain" will be Oct. 8. The program will feature Jerry Austin, former Dole Fellow and campaign manager for Jesse Jackson, as well as Republican pollster Whit Ayres. These guests will provide a status report on the campaign as election day nears.

"The Final Debate: What Do the Undecideds Think?" will take

place Oct. 15. The Dole Institute will show the televised presidential debate, and guests will signal their reactions as part of a dial group responding to the debate through electronic devices. The dial technology allows for focus-group members to instantaneously and anonymously register their responses to the candidates throughout the debate. Mary Banwart, associate professor of communication studies, then will discuss key points and reactions to debate moments with the undecided focus group.

The institute will explore the media's role in the election in "Media Coverage of Campaign 2008: Magic or Misguided" on Oct. 22. Guests include Mary Walsh, Chuck DeFeo and Terry Michael. Walsh is a producer for the CBS program "60 Minutes." DeFeo is the site manager for Townhall.com. Michael is the executive director for the Washington Center for Politics and Journalism and formerly was press secretary for the Democratic National Committee.

ku jobs

JOBS ONLINE: For a current list and complete job announcements, visit jobs.ku.edu. For KU Medical Center jobs, visit jobs.kumc.edu. Search either by using the 8-digit code provided below (when available) or by department name. KU is an equal opportunity, affirmative action employer.

FACULTY Assistant or Associate Professor
Rhetoric and Composition, English, Full Time

Assistant Professor
Anthropological Archaeology, Anthropology, Full Time
Medical Anthropology, Anthropology, Full Time
Applied Behavioral Science, Full Time
Supply Chain Management, Business, Full Time
Bioanalytical Chemistry, Chemistry, Full Time
Organizational Communications, Communication Studies, Full Time
Contemporary Chinese Culture, East Asian Languages, Full Time
Bilingualism/Second Language Acquisition, Linguistics, Full Time
Numerical Analysis, Mathematics, Full Time
Psychology, Full Time
Middle East Politics, Political Science, Full Time

Assistant/Associate Professor
Pharmacy Practice, Full Time, 00201797

Chair/Professor
Electrical Engineering and Computer Science, Full Time, 00004007
Special Education, Full Time

Lecturer - POOL
Civil/Environmental/Architectural Engineering, Part Time, 00066317
Aerospace Engineering, Part Time, 0006679
African/African-American Studies, Part Time, 00001707
American Studies, Part Time, 00064945
Applied Behavioral Science, Part Time, 00066225
Applied English Center, Part Time
Applied English Center, Part Time
Chemistry, Part Time, 00003212
Classics, Part Time, 00064985
Communication Studies, Part Time, 00003616
Design, Part Time, 00004269

East Asian Languages, Part Time, 00002908
Economics, Part Time, 00003539
Electrical Engineering and Computer Sciences, Part Time, 00067075
Engineering Management, Part Time, 00065074
English, Part Time, 00002031
European Studies, Part Time, 00066165
French and Italian, Part Time, 00005380
Germanic Languages/Literatures, Part Time, 00066428
History, Part Time, 00001753
History of Art, Part Time, 00206977
Humanities and Western Civilization, Part Time, 00065030
Latin American Studies, Part Time, 00066947
Linguistics, Part Time, 00002642
Mathematics, Part Time, 00002884
Mechanical Engineering, Part Time, 00065082
Music and Dance, Part Time

Pharmacy Practice, Part Time, 00200750
Philosophy, Part Time, 00002946
Physics and Astronomy, Part Time, 00065771
Political Science, Part Time, 00061014
International Studies, Political Science, Part Time, 00003544
Public Administration, Part Time, 00002599
Religious Studies, Part Time, 00066719
Slavic Languages and Literatures, Part Time, 00003451
Sociology, Part Time, 00001457
Spanish and Portuguese, Part Time, 00003368
Undergraduate Biology Program, Part Time, 00001632
Graduate Support Program, Applied English Center, Part Time, 00065314

Lecturer/Executive Director
Kansas Scholastic Press Association, Journalism, Full

Time, 00004899

Visiting Assistant Professor POOL
Studio Design, Architecture Administrative and Academic, Full Time

STAFF Administrative Associate
Receptionist, Study Abroad, Full Time, 00065691

Community Mobilizer
Institute for Life Span Studies, Full Time, 00207105

Coordinator
Family-School Coordinator, Center for Research on Learning, Full Time, 00068411
Institute for Life Span Studies, Full Time, 00066529

Graphic Designer
Designer/Production Manager, Lied Center, Full Time, 00206137

Network Specialist
Information Services-Information Technology, Full Time, 00062654

Office Administrator
Center for Remote Sensing Ice Sheets, Full Time, 00005178

Office Assistant
Center for Remote Sensing Ice Sheets, Full Time, 00064621

POOL: Master Teacher
Center for Science Education, Full Time, 00066566

POOL: Post Doctoral Researcher
Bioinformatics, Full Time, 00200775

Chemistry, Full Time, 00062445
Institute for Life Span Studies, Full Time, 00062363
Medicinal Chemistry, Full Time, 00206735
Pharmaceutical Chemistry, Full Time, 00061075
Higuchi Biosciences Center, Full Time, 00061112

POOL: Trainer
Training Coordinator, Continuing Education, Part Time, 00206179

Project Director
Director of Technology Research and Development, Education Administration, Full Time, 00207067

Research Aide
Institute for Life Span Studies, Part Time, 00207043

Research Assistant
Higuchi Biosciences Center, Full Time, 00066710

Trainer
Institute for Life Span Studies, Part Time, 00065368



Submitted/KU Medical Center

Wanda Bonnel, associate professor of nursing, right, was among the KU Medical Center Kemper fellowship recipients. She is congratulated by, from left, Karen Miller, senior vice chancellor for academic and student affairs, KU Medical Center, and dean of KU schools of allied health and nursing; Alan Rawitch, vice chancellor for academic affairs and dean of graduate studies; Betsey Green, senior vice president, Commerce Bank; Chancellor Robert Hemenway; and Barbara Atkinson, executive vice chancellor of KU Medical Center and executive dean of KU School of Medicine.

Four KUMC faculty earn Kemper fellowships

KU Medical Center faculty members Wanda Bonnel, Won Choi, April McVey and John Wood recently received William T. Kemper Fellowships for Teaching Excellence. The honor recognizes KU professors who demonstrate outstanding teaching skills inside and outside of the classroom.

Bonnel is an associate professor of geriatric nursing and nursing education, where she has pioneered projects in e-mentoring and online coursework.

Choi is an associate professor of preventive medicine and public health, where his subject matter includes behavioral epidemiology and epidemiologic methods.

McVey is an associate professor of neurology and director for the neurology residency program at the medical center.

Wood is an associate professor of molecular and integrative physiology and member of the Department of Surgery.

Prof discusses African societal problems in new KU YouTube clip

On the surface, Kansas and Nigeria may not appear to have much in common. Ebenezer Obadare, assistant professor of sociology, could tell you otherwise.

Nigeria, like many African nations, is watching much of its youth leave for opportunities elsewhere. In a new KU YouTube video, Obadare, a Nigerian, discusses transnational migration and its effects, how the postcolonial state has persisted in Africa, despite efforts to the contrary, and how citizens have survived for

decades in the face of overwhelming odds. www.youtube.com/watch?v=6J-jQNekAHU.

Because of ongoing migration in and out of the nation, Obadare has found Nigerian citizens have a less-robust relationship with the state. Many young people in the country feel there are not adequate opportunities there, leading them to seek employment and new lives elsewhere.

Such migration often has immense political, social and economic ramifications.



Reallocation under way to improve information services, infrastructure

Information Services has embarked on a reallocation plan that will enable improvements to KU's information infrastructure to begin immediately. Improving network connectivity and access to information for IT users, ensuring the reliability of enterprise-essential computing resources, and access to information for IT users, and enhancing library resources are among the priority initiatives the reallocation plan will address.

"Continuing investment in KU's information infrastructure is critical to many of our institutional goals," Provost and Executive Vice Chancellor Richard Lariviere said. "Information Services has responded with a plan to redirect funds in a manner that will enhance those resources that are so essential to our work at KU. The plan recommends a coordinated institutional approach to hardware and software purchasing, licensing and information management that promises far greater return of investment for KU. I commend Vice Provost for

Information Services Denise Stephens and her colleagues for thinking beyond our present model and practices."

The plan calls for reallocating \$3 million from within the Information Services budget over the next two years. This fiscal year, redirected funds will be derived from several current position vacancies in the Information Technology and KU Libraries divisions, improved operational processes and technical changes, and realignment of some existing staff positions.

"As we move forward with implementing this plan, we will be continuing to evaluate the way information and information technology services are delivered for the KU community," Stephens said. "The Provost directed us to consider all financially expedient options, including eliminating, restructuring and outsourcing, while maintaining a focus on improving service quality. Our leaders in IT and the Libraries, together with our colleagues Diane Goddard (interim vice

provost for administration and finance) and Barry Swanson (associate comptroller and director of purchasing) have been diligent in their evaluations and recommendations for this plan to significantly advance KU's investment in its information infrastructure."

During the next few months, Information Services will lead an initiative to maximize KU's investment in information infrastructure resources and services. That initiative is expected to identify further funds for reallocation. In FY2010, additional redirected funds will be derived from the elimination of nine positions that are currently staffed, including seven in IT and two in Libraries. The affected employees have received notification from the university and will receive assistance from Information Services and Human Resources during the intervening months to identify other possible opportunities at KU.

KU Medical Center jumps in medicinal research money ranks

Both the KU Medical Center and KU as a whole have climbed in rankings of research spending. The medical center climbed eight spots in the recently released research spending ratings of schools of medicine, compiled by the National Institutes of Health, and KU climbed to 44th overall in science and engineering research spending.

The ratings come at a time of unprecedented stagnation in federal research funding.

The KU Medical Center rose eight spots to 68th in the nation among all schools of medicine based on total National Institutes of Health grant awards. Among public institutions, it rose from 47th to 39th. This signifies tremendous growth from just two years ago, when the medical center was ranked 81st in the country. In

addition, with one exception, all of the school's basic science departments are in the top 25 for public medical schools. Two of the departments are ranked in the top 10, with anatomy third and physiology ninth. Rankings are based on National Institutes of Health fiscal year 2007, in which the KU School of Medicine was awarded \$45.3 million.

"At a time when federal NIH funding remains flat, KU School of Medicine faculty continue to secure new funding for life sciences research," said Barbara Atkinson, executive vice chancellor of KU Medical Center and executive dean of the School of Medicine. "These improved rankings mean we're not only recruiting new, world-class talent to our campus, but our faculty continue to conduct meaningful research

aimed at improving the health of our region."

Paul Terranova, vice chancellor for research at the KU Medical Center, said the university as a whole is well positioned for more growth.

"A high priority for the National Institutes of Health is to translate laboratory discoveries into real-world cures," Terranova said. "KU has the researchers, the infrastructure and the mandate to achieve that goal. The bi-campus KU Cancer Center is just one example. KU has a great opportunity to benefit society as we increase our level of research."

Among the top 100 universities on the list, KU was one of 55 whose federally funded science and engineering research increased in the last fiscal year.



ku people

NOTABLE ALUMS: The KU Alumni Association recently honored two alumni for their remarkable service to the university with the Fred Ellsworth Medallion. Robert L. Driscoll of Mission Woods, who earned his undergraduate degree from the College in 1961 and his KU law degree in 1964, and Carol Swanson Ritchie of Wichita, who earned her bachelor's degree in education in 1954, were the recipients. Driscoll is a partner in the law firm of Stinson Morrison Hecker in Kansas City, Mo. Swanson Ritchie is a longtime volunteer for many local and state organizations and has remained a devoted KU ambassador.

Colombo to lead Life Span Institute

John Colombo, interim director of the Schiefelbusch Institute for Life Span Studies since March 1, has been named to the position on a permanent basis, effective immediately. He is the third person to head the institute since its formation in 1990 out of the Bureau of Child Research. He was appointed following a national search.

Colombo succeeds and will report to Steve Warren, who became vice provost for research and graduate studies in January. Colombo is a professor of psychology at KU and was associate director for cognitive neuroscience at the Life Span Institute since 2004. Past campus administrative appointments include three years as an associate dean in the former Graduate School and one year as acting chair of the Department of Psychology. He has also served as faculty chair of the campus institutional review board (now the Human Subjects Committee) since 1993.

at the William Allen White School of Journalism and Mass Communications, is one of five recipients of the Smith College Medal. The award recognizes graduates' extraordinary professional achievements and outstanding service to their communities.

Sethi is a member of the Sustainability Advisory Board Lawrence and chairs the working group on Climate Change Education, Outreach and Policy for the Mayor's Climate Protection Task Force. She earned her bachelor's in sociology and women's studies at Smith and her master's of business administration in sustainable management from the Presidio School of Management in San Francisco.



Simran Sethi

Distinguished Librarian Award. Dandridge joined KU Libraries in 1986, working in the Kansas Collection. As the field archivist for the library's African-American Experience collection program, she is responsible for building and maintaining one of the largest archival resources on the subject in the state of Kansas. Former KU Chancellor Gene A. Budig and his wife, Gretchen, established the library faculty award with KU Endowment in 2001. The award recognizes achievements in professional service and scholarship, as well as reputation among professional colleagues.



Deborah Dandridge

The award was presented at the KU Libraries' Celebration of Excellence Sept. 19 at Watson Library.

has hired two new employees. Tommie Cassen has accepted the new position of legislative and communications manager for University Communications and Government Relations, and Suzannah Johannes has been hired as a new graphic designer in University Relations.

Cassen comes to KU from the Center for Remote Sensing of Ice Sheets, where she was program assistant for nearly two years. She has also worked for Payless Shoe Source and the Shawnee County district attorney's office. She has degrees from Washburn University and Mid Plains Community College.

Johannes received a degree in industrial design from KU. She previously worked as a graphic designer for Sac and Fox Casino and for the Lawrence Journal-World.

Award in the volunteer category by the American Academy of Family Physicians at its recent annual meeting in San Diego. The academy's Scientific Assembly, one of the largest gatherings of primary care providers in the country, was held Sept. 17-21. The award recognizes exemplary teaching skills, the implementation of outstanding educational programs and the development of innovative teaching models. She is a family physician and has been employed by Wichita Clinic since 1982.

Roberts chosen for achievement award

Jim Roberts, professor of electrical engineering and computer science, is the 2008 recipient of the Institute of Electrical and Electronics Engineers Education Society Achievement Award. The award recognizes significant contributions to the society over a period of years and will be presented at the society's Frontiers in Education Conference, to be held Oct. 24 in Saratoga Springs, N.Y.

Sethi earns Smith College Medal

Simran Sethi, the Lacy P. Haynes Professional in Residence

Dandridge wins librarian award

Deborah Dandridge, librarian at the Spencer Research Library, is the recipient of the 2008 Budig

Cassen, Johannes join communications

University Communications

Woodring named exemplary teacher

Cathy Woodring, clinical assistant professor in the Department of Family and Community Medicine at the School of Medicine-Wichita, was awarded the 2008 Exemplary Teacher

NEWS IN BRIEF

Life Span Institute group wins health service award

The Work Group for Community Health and Development at the Life Span Institute has received the 2008 Corporate Public Health Service Award from the Kansas Public Health Association. The annual award is presented to a company or organization that makes a significant contribution through policies and activities to the mission of public health and environmental improvement in Kansas. The 2008 award recognizes the Work Group's Community Tool Box, a free Web-based source of information on community health and development. It has been recognized around the world as an effective tool to improve public health and leverage social change. The award was presented Sept. 18 in Topeka.

Clery report about KU safety now available

The annual security report about KU safety policies, crime statistics and campus resources is now available online at www.ku.edu/safety or on paper by contacting the Office of the Vice Provost for Student Success, 133 Strong Hall, or (785) 864-4060.

Representatives urge increase in research funds

Rep. Dennis Moore, D-Kan., was one of 29 members of the House of Representatives to sign a recent bill urging

House leadership to increase Department of Education and National Science Foundation research funding. The bipartisan bill encourages leaders to keep the funding pipeline full to avoid the cycle of starting and stopping research funding opportunities. The signers of the bill also sent a letter to Nancy Pelosi, D-Calif., and to members of the committee on appropriations encouraging them to continue robust research funding.

Unclassified Senate to host Dole election event

The professional development committee of the Unclassified Senate is hosting "Dole Institute: The 2008 Election" from noon to 1:30 p.m. Oct. 10 in the Sabatini Multicultural Resource Center classroom. The event is an introduction to the events the Dole Institute will be holding this fall in preparation of the November election. Jonathan Earle, associate director for programming at the institute, will lead a discussion of the current status of the race. Participants can bring a lunch to the event.

Gilyard to present annual Eberhardt Lecture Oct. 6

Keith Gilyard, professor of English at Penn State University, will present the English Department's 2008-09 Eberhardt Lecture at 7:30 p.m. Oct. 6 at Alderson Auditorium in the Kansas Union. The lecture, "Literacies of a Lifetime: Literature, Ethnicity, Code," is free and open to the public.

CLAS seeking nominees for highest alumni honor

The College of Liberal Arts and Sciences is seeking nominations for its highest honor, the Alumni Distinguished Achievement Award. The annual award is presented to select graduates of the College who have excelled in their contributions to KU, professions or communities. A nomination form is available at www2.ku.edu/~clas/alumni/alumniachievementaward.s.html.

Nominees must have graduated from the College a minimum of 10 years ago. Electronically submitted nominations are preferred, although hard copies will be accepted. The deadline for nominations is Oct. 15. For more information or to submit a nomination, contact Christie Appelman, 864-3516 or cappel@ku.edu.

Nominations sought for annual KU research award

The Office of Research and Graduate Studies is seeking nominations for its annual KU Research Achievement Award. The award honors an outstanding academic staff researcher from the Lawrence campus. The recipient will receive a plaque and \$10,000 in research funds. Only full-time academic staff researchers working within an academic department or research center are eligible. A substantial portion of the work for which the award is given must have been done at KU.

For more information and to submit nominations, contact Linda Crawford at 864-7298 or lcrawfor@ku.edu.

IN MEMORY

R. Carl Shankland

R. Carl Shankland, 92, died Sept. 16. He retired from KU printing services in 1981. He is survived by three children, 13 grandchildren and 22 great-grandchildren.

Byron S. Wenger

Byron S. Wenger, 89, died Sept. 8. He was an assistant professor of anatomy from 1951 to 1969. After teaching in Canada and Grenada, Wenger returned to Lawrence in 1995, where he volunteered for Audio-Reader, the Spencer Museum of Art and the Natural History Museum. He also participated in the Brain Aging Project at the KU Medical Center. Wenger is survived by his wife, Eleanor; four children; and eight grandchildren. The family suggests donations to the Alzheimer's Association, www.alz.org

Orville L. Voth

Orville L. Voth, 84, died Sept. 22. He was formerly director of independent study at KU. Survivors include his wife, Helen; four daughters; six grandchildren; and five great-grandchildren. The family suggests memorials to Bethel College, sent in care of Petersen Funeral Home, 215 N. Main, Newton, KS 67114.

George R. Wampler

George R. Wampler, 79, died Sept. 27. He worked as a plumber for 21 years at KU, retiring in 1991. Survivors include his wife, Betty; four sons; five daughters; 29 grandchildren; 31 great-grandchildren; and two great-great-grandchildren. The family suggests memorials to Jefferson County Friends of Hospice, sent in care of Barnett Chapel Oaks, P.O. Box 416, Oskaloosa, KS 66066.

Lloyd Sponholtz

Lloyd Sponholtz died Sept. 30. Sponholtz, an associate professor of history, was a longtime faculty member, joining KU in 1967. Sponholtz is survived by his wife, Charlotte, and their four children. Sponholtz won a W.T. Kemper Fellowship in 2000, was active in governance and was an early director of the Mount Oread Scholars Program.

OREAD

Editor: Mike Krings
Ph: (785) 864-8860 | Fax: (785) 864-3339
oread@ku.edu | www.oread.ku.edu
Photographer: David McKinney
Calendar Editor: Lauren Beatty
Graphic Designer: Jan Morris Nitcher
Online producer: Justin Henning

Oread is an employee publication published at the University of Kansas, Office of University Relations, 1314 Jayhawk Blvd., Lawrence, KS 66045-3176.

NEXT publication: Oct. 20, 2008
(Deadline: Oct. 13)

GET your news in Oread:
Submit your news about new hires, promotions, events, awards and other happenings to oread@ku.edu or by campus mail to Mike Krings, University Relations,

at least one week prior to publication date.

CHECK Out:
www.news.ku.edu



Printed by Kingston Press Inc., Lawrence